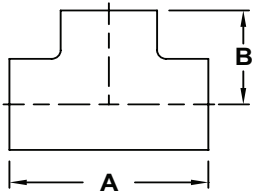


Unpolished Tees

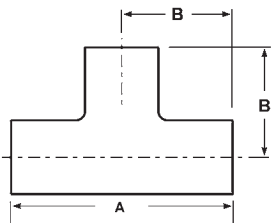
Short Weld - B7WWW

Sanitary Fittings



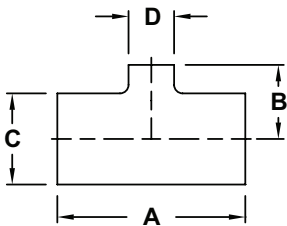
Tube OD	Dimensions		Wall Thickness	Unpolished 304 Stainless Steel	Unpolished 316L Stainless Steel
	A	B		Part #	Part #
1"	2.250"	1.125"	.065"	B7WWW-G100U	B7WWW-R100U
1½"	3.312"	1.656"	.065"	B7WWW-G150U	B7WWW-R150U
2"	4.124"	2.062"	.065"	B7WWW-G200U	B7WWW-R200U
2½"	4.688"	2.344"	.065"	B7WWW-G250U	B7WWW-R250U
3"	5.188"	2.594"	.065"	B7WWW-G300U	B7WWW-R300U
4"	6.876"	3.438"	.083"	B7WWW-G400U	B7WWW-R400U

Long Weld - B7W



Tube OD	Dimensions		Wall Thickness	Unpolished 304 Stainless Steel	Unpolished 316L Stainless Steel
	A	B		Part #	Part #
¾"	4.000"	2.000"	.065"	---	B7W-R75U
1"	3.750"	1.875"	.065"	B7W-G100U	B7W-R100U
1½"	4.500"	2.250"	.065"	B7W-G150U	B7W-R150U
2"	6.000"	3.000"	.065"	B7W-G200U	B7W-R200U
2½"	6.000"	3.000"	.065"	B7W-G250U	B7W-R250U
3"	6.500"	3.250"	.065"	B7W-G300U	B7W-R300U
4"	7.750"	3.875"	.083"	B7W-G400U	B7W-R400U

Reducing Weld - B7RWWW



Tube OD	Dimensions				Wall Thickness	Unpolished 304 Stainless Steel	Unpolished 316L Stainless Steel
	A	B	C	D		Part #	Part #
1½" x 1"	3.312"	1.375"	1.500"	1.000"	.065"	B7RWWW-G150100U	B7RWWW-R150100U
2" x 1"	4.124"	1.625"	2.000"	1.000"	.065"	B7RWWW-G200100U	B7RWWW-R200100U
2" x 1½"	4.124"	1.906"	2.000"	1.500"	.065"	B7RWWW-G200150U	B7RWWW-R200150U
2½" x 1½"	4.688"	2.156"	2.500"	1.500"	.065"	B7RWWW-G250150U	B7RWWW-R250150U
2½" x 2"	4.688"	2.312"	2.500"	2.000"	.065"	B7RWWW-G250200U	B7RWWW-R250200U
3" x 1½"	5.188"	2.406"	3.000"	1.500"	.065"	B7RWWW-G300150U	B7RWWW-R300150U
3" x 2"	5.188"	2.562"	3.000"	2.000"	.065"	B7RWWW-G300200U	B7RWWW-R300200U
4" x 2"	6.876"	3.062"	4.000"	2.000"	.083"	B7RWWW-G400200U	B7RWWW-R400200U
4" x 3"	6.876"	3.094"	4.000"	3.000"	.083"	B7RWWW-G400300U	B7RWWW-R400300U