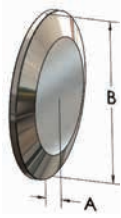


High Purity BioPharm Fittings

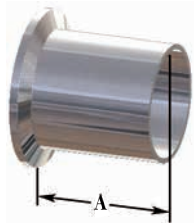
Solid End Caps - T16AMP


Sanitary
Fittings

BPE Table DT-4.1.5-2

Size	Dimensions		PL finish - SF1 Part #	PM finish - SF4 Part #
	A	B		
½" - ¾"	0.19"	0.98"	T16AMP-050075PL	T16AMP-050075PM
1" - 1½"	0.25"	1.98"	T16AMP-100150PL	T16AMP-100150PM
2"	0.25"	2.52"	T16AMP-200PL	T16AMP-200PM
2½"	0.25"	3.05"	T16AMP-250PL	T16AMP-250PM
3"	0.25"	3.58"	T16AMP-300PL	T16AMP-300PM
4"	0.31"	4.68"	T16AMP-400PL	T16AMP-400PM

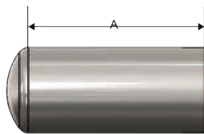
Auto Weld Ferrules - TL14AM7



BPE Table DT-4.1.4-1

Size	Dimension A	PL finish - SF1 Part #	PM finish - SF4 Part #
½"	1.75"	TL14AM7-050PL	TL14AM7-050PM
¾"	1.75"	TL14AM7-075PL	TL14AM7-075PM
1"	1.75"	TL14AM7-100PL	TL14AM7-100PM
1½"	1.75"	TL14AM7-150PL	TL14AM7-150PM
2"	2.25"	TL14AM7-200PL	TL14AM7-200PM
2½"	2.25"	TL14AM7-250PL	TL14AM7-250PM
3"	2.25"	TL14AM7-300PL	TL14AM7-300PM
4"	2.25"	TL14AM7-400PL	TL14AM7-400PM

Weld Caps - T16W



BPE Table DT-4.1.5-1

Size	Dimension A	PL finish - SF1 Part #	PM finish - SF4 Part #
½"	1.50"	T16W-050PL	T16W-050PM
¾"	1.50"	T16W-075PL	T16W-075PM
1"	1.50"	T16W-100PL	T16W-100PM
1½"	1.50"	T16W-150PL	T16W-150PM
2"	1.50"	T16W-200PL	T16W-200PM

PL Finish – SF1
 OD = 32R_a Mechanically Polished
 ID = 20R_a Mechanically Polished

PM Finish – SF4
 OD = 32R_a Mechanically Polished
 ID = 15R_a Mechanically Polished and Electropolished